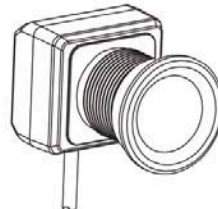




**KINEQUIP INC.**  
**SPECIALTY VEHICLE DIVISION**  
[www.KINEQUIP.com](http://www.KINEQUIP.com)  
800-982-8894



**KINEQUIP INC.**



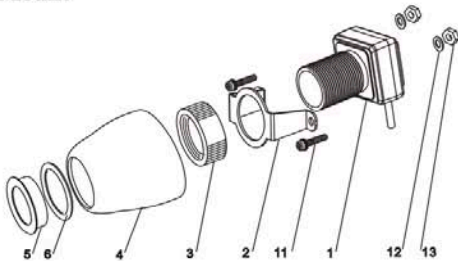
### Installation Instructions

**Model: CCD05 Camera**  
**Color Camera External Mount**

#### FEATURES:

- High Resolution, 1/3" CCD Color Camera
- Compact Zinc Alloy Die Cast Body
- Waterproof Housing
- Waterproof Microphone
- Adjustable Mounting Angle
- Wide Angle Lens
- Flush Mount or Surface Mount Flexible
- Mirror Image And Normal Image Is Optional

### Surface Mount



- Note:
- |                     |                    |                 |
|---------------------|--------------------|-----------------|
| 1. Camera           | 2. Support Bracket | 3. Lock Nut     |
| 4. Protective Cover | 5. Top Cover       | 6. Flat Washer  |
| 11. Combine Screw   | 12. Washer         | 13. Docking Nut |

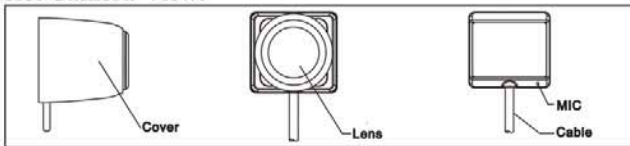
### Specification:

1. Signal System:NTSC
2. Voltage:DC12V
3. Current:80mA
4. Image Sensor:1/3" CCD Color Sensor  
NTSC:510 x492 picture elements
5. Horizontal Definition:420 Lines
6. Viewing Angle:120 degrees
7. Minimum Illumination:0.8LUX
8. Outer Dimensions:1.18"(W)x1.10"(H)x1.65"(D)
9. Weight:2.5OZ

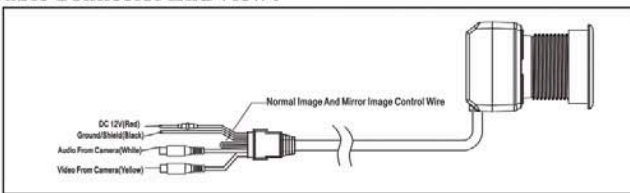
#### Normal/Reverse Image Control Wire:

The Control Wire is located at the camera cable connector. When Control Wire is not snipped, the camera image will be normal. When the Control Wire is snipped, the camera image will be reversed.

**Color Camera View:**



**Cable Connector End View:**



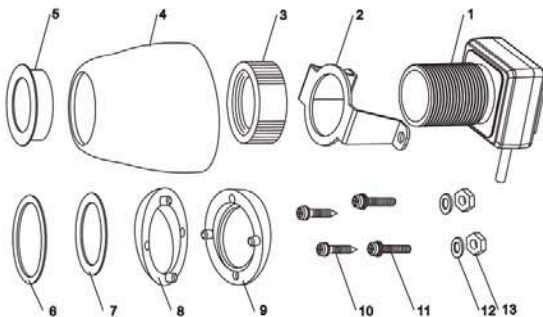
1

**Surface Mount Installation:**

1. Locate suitable mounting location in the rear center of the vehicle and use the support bracket (#2) as a template to mark and drill two 5/32" holes on the mounting location.
2. Put the support bracket (#2) onto the camera neck, then screw the lock nut along the camera neck to secure the bracket (#2) to the camera body (#1) in the showed direction.
3. Screw the combine screws (or tapping screws) into the holes to attach the camera support bracket to the vehicle with the camera cable facing downwards.
4. Place the protective cover (#4) on the support bracket, then place the flat washer 1 (#6) and top cover (#5) on the camera neck. Tighten the top cover (#5) to the further location along the camera neck towards the camera body.
5. Route the camera cable thru an existing grommet into the vehicle.
6. Connect the camera cable to the extension cable and route towards the monitor.

10

**Contents:**



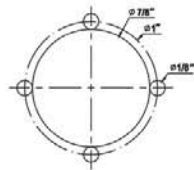
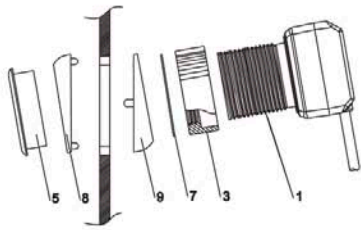
3

**Angle Flush Mount Installation:**

1. Select a suitable mounting location in the rear center of vehicle. Check behind panel for wire routing access and confirm that the drill will not damage any existing components. Drill four 1/8" positioning holes and one 7/8" mounting hole at the mounting location according to the drawing of *Size of Mounting Holes*.
2. Screw the lock nut (#3) and the flat washer 2 (#7) with the non-threaded side to the camera neck in the showed direction.
3. Mount the slant washer 2 (#9) to the interior mounting surface.
4. Place the camera neck through the pervious drilled hole with the lens exposed. Then place the slant washer 1 (#8) to the exterior mounting surface.
5. Tighten the top cover (#5) towards the camera body.
6. Hold the top cover (#5) by hand and tighten the lock nut (#3) towards the top cover (#5) with the camera cable downwards.
7. Route the camera cable thru an existing grommet into the vehicle.
8. Connect the camera cable to the extension cable and route towards the monitor.

8

### Angle Flush Mount



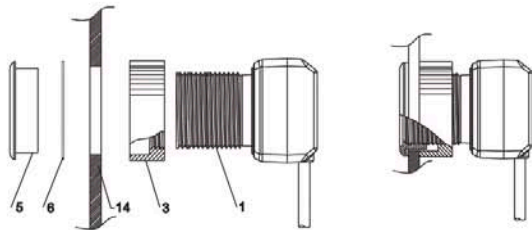
Size of Mounting Holes  
(See the Attached Page)

Note: 1. Camera  
5. Top Cover  
8. Slant Washer 1  
3. Lock Nut  
7. Flat Washer 2  
9. Slant Washer 2

### Contents Description:

- |                        |                      |
|------------------------|----------------------|
| 1. Camera: 1           | 8. Slant Washer 1: 1 |
| 2. Support Bracket: 1  | 9. Slant Washer 2: 1 |
| 3. Lock Nut: 1         | 10. Tapping Screw: 2 |
| 4. Protective Cover: 1 | 11. Combine Screw: 2 |
| 5. Top Cover: 1        | 12. Washer: 2        |
| 6. Flat Washer 1: 1    | 13. Docking Nut: 2   |
| 7. Flat Washer 2: 1    |                      |

## Flush Mount



Note: 1. Camera                      3. Lock Nut                      5. Top Cover  
 6. Flat Washer 1                  14. Mounting Plate

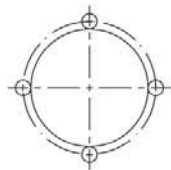
5

## Flush Mount Installation:

1. Select a suitable mounting location in the rear center of vehicle. Check behind panel for wire routing access and confirm that the drill will not damage any existing components. Use a 7/8" hole saw to drill the mounting hole.
2. Screw the lock nut with the threaded side toward the camera body in the showed direction, then put the camera neck through the mounting hole with the lens exposed and wire cable facing down.
3. Place the flat washer 1 (#6) and top cover (#5); tighten the top cover (#5) to the further location along the camera neck.
4. Hold the top cover by hand and tighten the lock nut in towards the top cover (#5) with the camera cable downwards.
5. Route the camera cable thru an existing grommet into the vehicle.
6. Connect the camera cable to the extension cable and route towards the monitor.

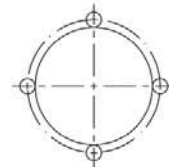
6

### Size of Mounting Holes (1:1)



- Note: 1. Drill the center big hole when used the Flush Mount way.  
 2. Drill the center big hole and the four small holes when used the Flush Mount With View Angle Adjustable way.

### Size of Mounting Holes (1:1)



- Note: 1. Drill the center big hole when used the Flush Mount way.  
 2. Drill the center big hole and the four small holes when used the Flush Mount With View Angle Adjustable way.